

**LiveAction**

**Top 5 Challenges in  
Network Performance  
for Regional Banks  
and How to Overcome Them**



## Introduction

Regional banks face unique challenges when it comes to network performance. Ensuring robust, secure, and efficient network operations is crucial for maintaining customer trust and operational efficiency. Here, we explore the top five network performance challenges faced by regional banks and how to overcome them.



## LiveAction

### / CHALLENGE #1

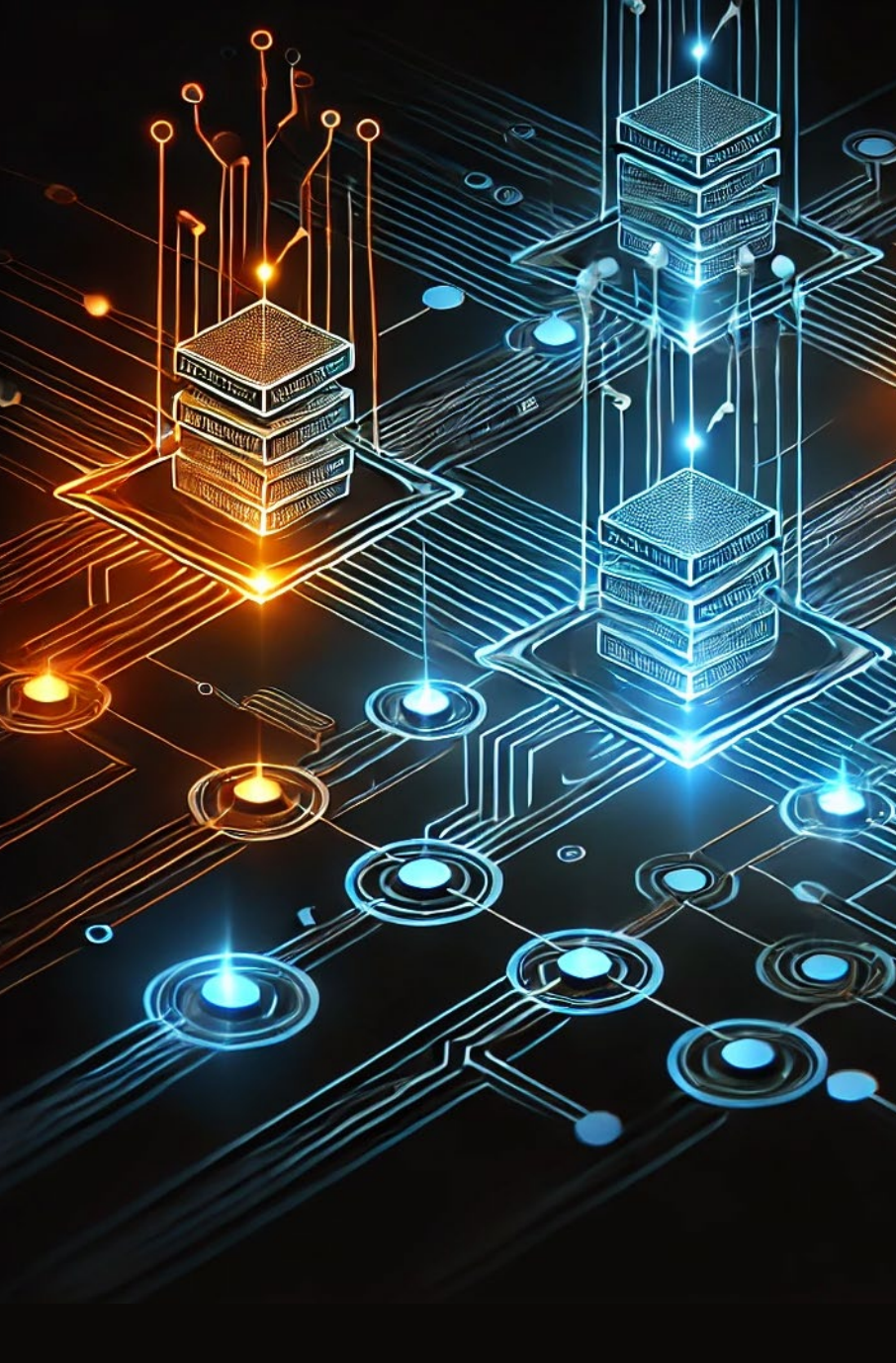
## Limited Network Visibility

### Challenge:

Regional banks often struggle with limited visibility into their network infrastructure, making it difficult to identify and troubleshoot issues promptly.

### Solution:

Implement a comprehensive network performance monitoring (NPM) solution that provides a unified view of the entire network. Tools should offer end-to-end visibility, enabling quick identification and resolution of network issues from a single solution.



## LiveAction

### CHALLENGE #2

# Managing Network Complexity

#### Challenge:

The increasing complexity of modern networks, including cloud and hybrid environments, can be overwhelming for IT teams.

#### Solution:

Simplify network management by leveraging NPM solutions that can handle diverse network environments. Automated monitoring and analytics can help manage complexity by providing actionable insights.



## LiveAction

### CHALLENGE #3

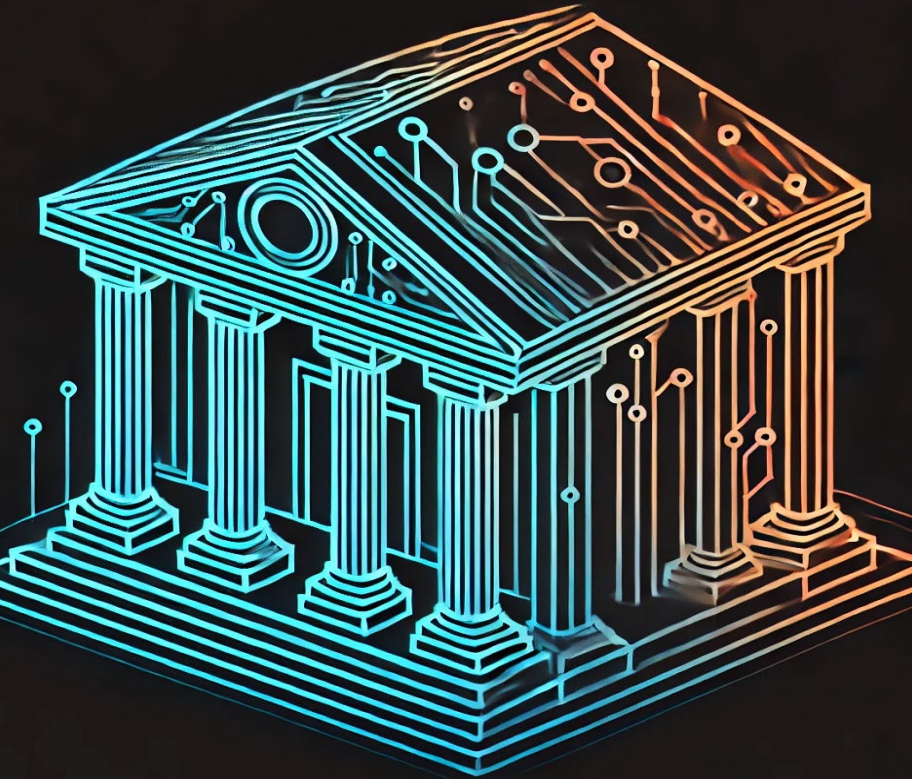
## Ensuring Network Security

### Challenge:

Protecting sensitive financial data is paramount, yet network security threats are continually evolving.

### Solution:

Integrate security monitoring with NPM to detect and respond to threats in real time. High-density, packet capture can enhance security by providing deep packet inspection and forensic analysis in a small, and speedy form factor.



# LiveAction

## CHALLENGE #4

# Maintaining Compliance

### Challenge:

Regional banks must comply with stringent regulatory requirements, which demand detailed monitoring and reporting of network activities.

### Solution:

Use NPM tools that offer robust compliance features, including automated reporting and detailed reports. This ensures adherence to regulations like PCI DSS and GDPR.



## LiveAction

### / CHALLENGE #5

# Optimizing Network Performance

#### **Challenge:**

Ensuring optimal network performance is critical for delivering seamless banking services and maintaining customer satisfaction.

#### **Solution:**

Regularly monitor network performance metrics and establish performance baselines to quickly identify deviations. Look for solutions that provide real-time analytics and alerts, enabling proactive performance management.

## Conclusion

Overcoming these network performance challenges is essential for regional banks to maintain operational efficiency, security, and customer trust. By leveraging advanced NPM solutions, regional banks can achieve comprehensive network visibility, simplify management, enhance security, ensure compliance, and optimize performance.